

Technical Inspection

- Reserve your time slots
- 18:30 Brake test opens on request
- Closed shoes in pit and harbour
- For M / E / Accu: Only Re-Inspections on Saturday possible!



Harbour Rules

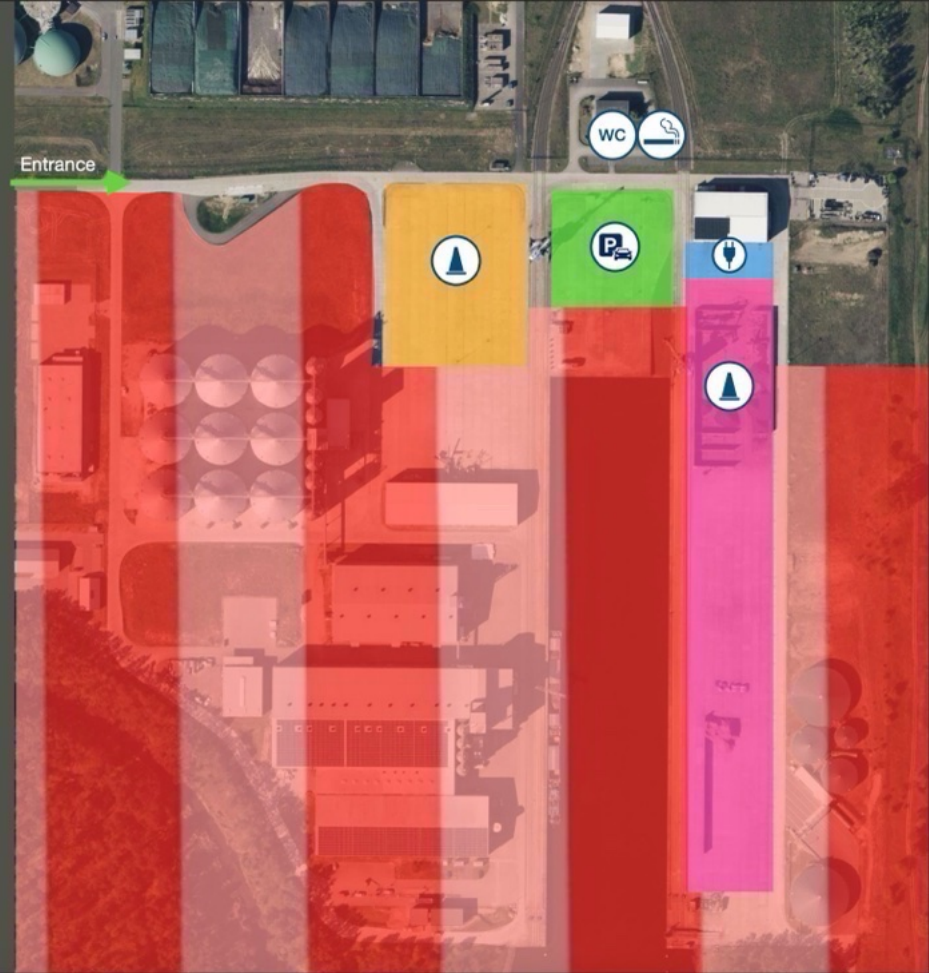
- Company premises (Betriebsgelände)
 - Video surveillance
- In general no Smoking in the harbour
 - Highly inflammable coal dust
 - There is a smoking area (check map for directions)
- Toilets are available (check map for directions)
- In case that an emergency happens
 - First call Ambulance/Firefighters
 - Second call Susi (0151 46 36 0 259)

112

0151 46 36 0 259

Harbour Rules

- Be careful with the navigation
- Dynamic area only with vest
- Not marked areas are free
- Spectators only until the marked lines



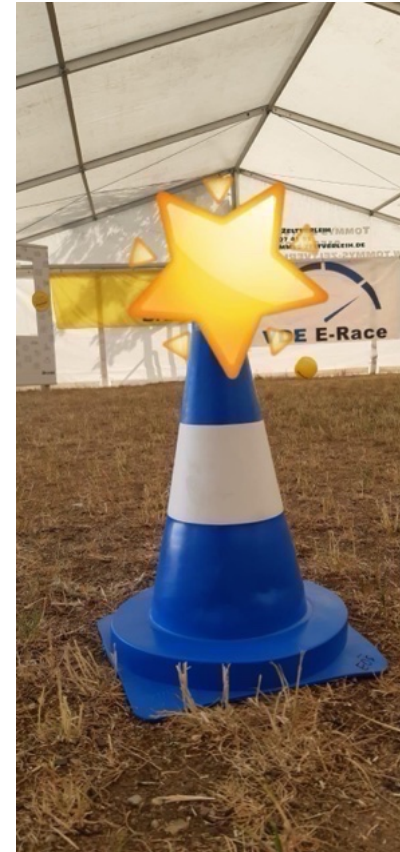
Harbour Rules

- If you do not stick to the rules, they will be stricter on Saturday



Famous Acceleration to Paradise

- 22:00-23:00
- Will close sharply
- 4 Volunteers to clean the track
- Put cool Need for Speed lighting on your cars



Camping Rules

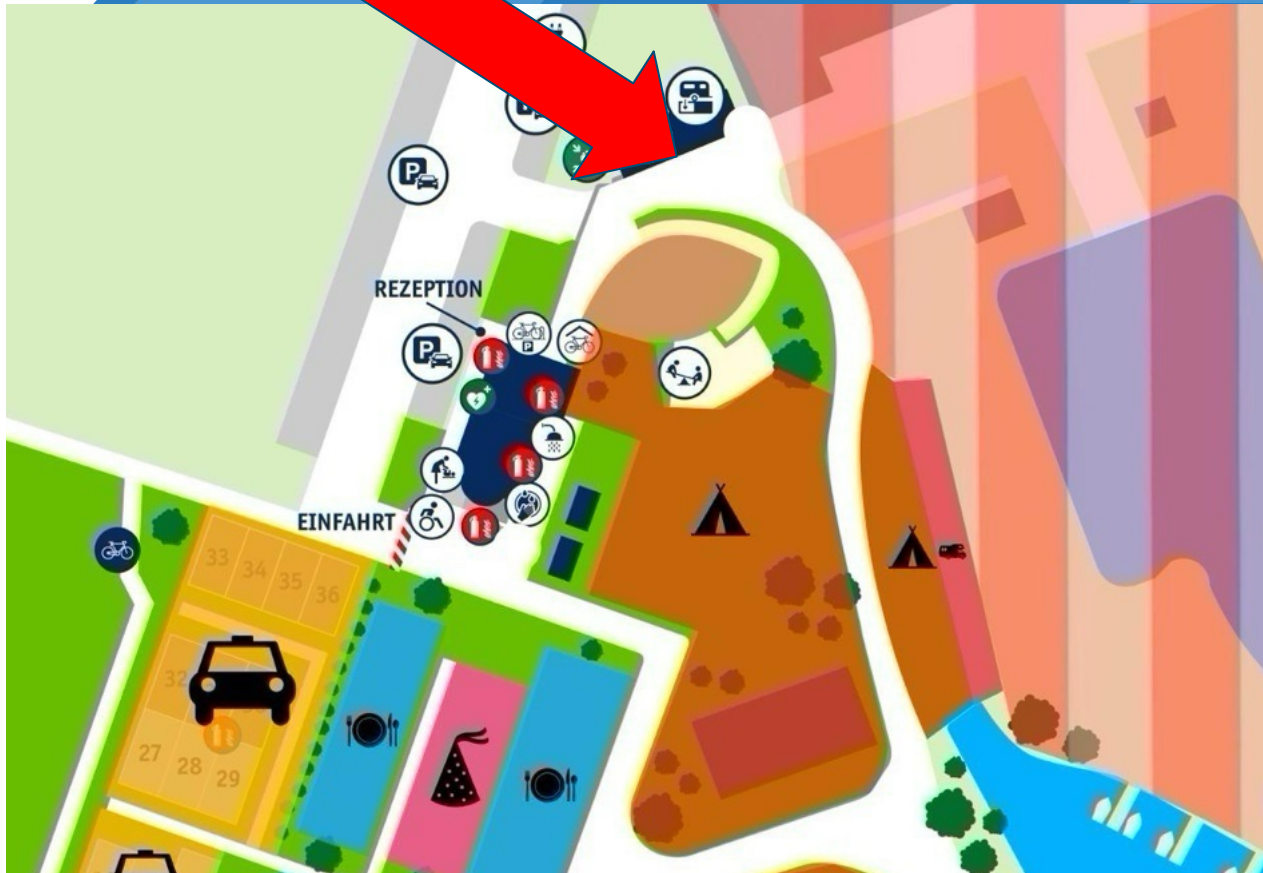
- Be quiet from 0:00
- Be nice to any furniture at the camping site (do not steal equipment)
- Contact persons:



Camping Rules

- Machining possible in the rain test area
- Please bring a workbench to the machining/carbon area; you can work in the whole area in front of the water dispenser





Camping Rules

- The kitchen area belongs to Vicci and his Crew :)



Camping Rules

- Keep the roads clear of vehicles and trailers



Cultural Dinner -> Cultural Döner

- Let's eat together
- Our Idea: Food sharing
- FaSTTube organised a Döner Spieß
- Please prepare enough: Everybody in your team gets full!
- Please contribute to the Döner Menu
- VDE provides **free beer**. You need to bring your own mug

